

Oboe

Aleluia

G. F. Haendel
(1685-1759)

Sheet music for Oboe, featuring measures 1 through 34. The music is in 4/4 time and includes dynamic markings (*f*, *mf*) and repeat signs. The score is divided into sections A, B, and C.

Measures 1-4: *f* (forte) and *mf* (mezzo-forte) dynamics. Section A is marked above measure 4.

Measures 5-9: Continuation of the melody.

Measures 10-14: Continuation of the melody.

Measures 15-19: Continuation of the melody. A double bar line is present at measure 17.

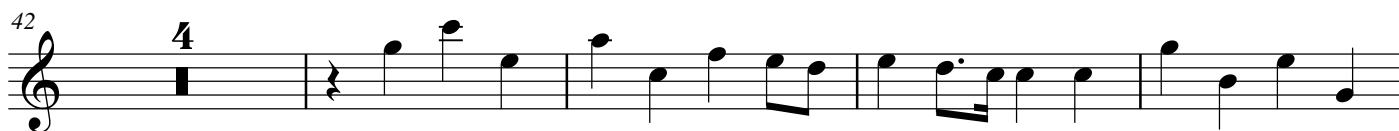
Measures 20-24: Continuation of the melody. Section B is marked above measure 20.

Measures 25-28: Continuation of the melody.

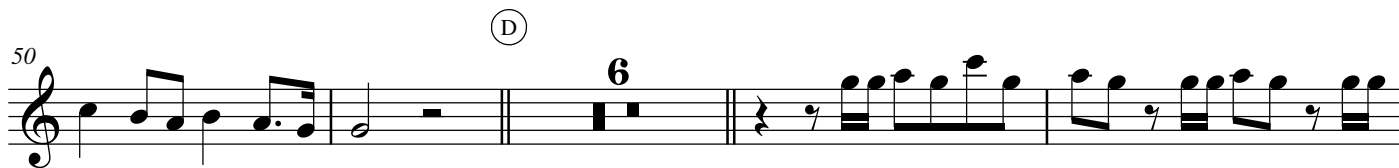
Measures 29-33: Continuation of the melody. Section C is marked above measure 29.

Measures 34: Continuation of the melody. A triple bar line is present at the end of measure 34.

2



50



60



64



69



75



80



85



90

